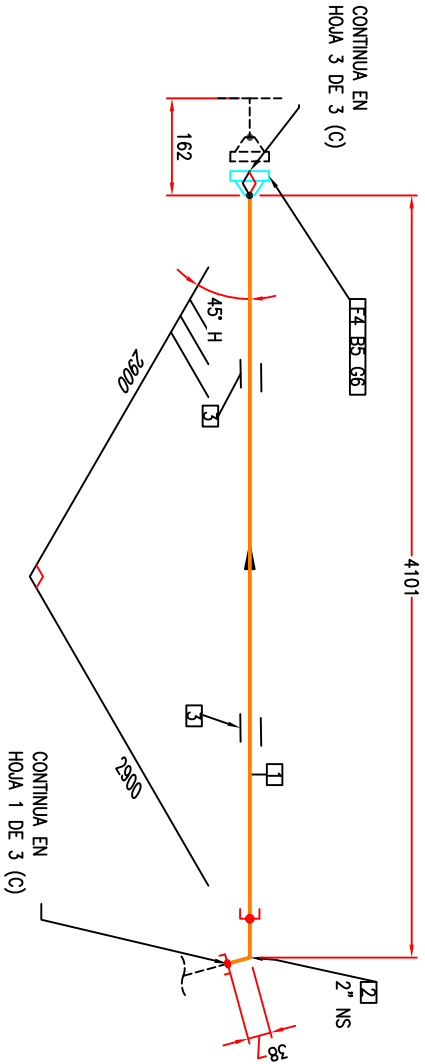


BILL OF MATERIALS				DESCRIPTION
ID	QTY	NO		
1	4.1M	2"	PIPE SEAMLESS, MATERIAL: API 5L GR B, SCH 40/STD, BEVELLED END,ASME B36.10.	
2	2	2"	ELBOW 90.0°, BW, ASTM A234 GR. WPB, SCH 40/STD, ASME B16.9	
3	2	2"	SUPPORT PIPE (ACCORDING TO TYPICAL)	
4	1	2"	FLANGE, WN, 150LB, RF, SCH 40/STD, ATSM A105, ASME B16.6	
5	4	5/8"x85	STD BOLT 2HT HX NUT A193 GR.B7/A194 ZINC, RF, 150 LB, ASME B18.2.1 & ASME B18.2.2	
6	1	2"	SPIRAL WOND GASKET 304/GRAPHITE-CS-, ZINC CR/304 IR, 4.5MM, 150 LB, ASME B16.20	



PROJECT NAME:			
Interconexión y optimización de la línea de alta presión en las ESR's -EE.SS. (1ra fase)			
TITLE:			
Interconexion Rack de Botellones y ESR64			
DRAWING NUMBER:			
P2275538-USIME1-ESR64-LT-0001			
LINE NO:	AREC:	UNIT:	TYPE:
2"-NG-63810-CS2500G			
JOB NUMBER:	SCALE:	SHEET:	REV.
	N.T.S.	2C OF 3C	0